

News Release

South Seattle Community College

6000 16th Avenue, SW, Seattle, WA 98106-1499 • www.southseattle.edu • (206) 764-5300

FOR IMMEDIATE RELEASE

June 15, 2009

Claim

Exhibit showcases works by Heidi Bender, Diana Falchuk, Nate Larson & Marni Shindelman, Laurie McLeod, Jamie McMurray, Nancy Popp, Sutton Beres Culler, and Dan Witz.

June 29 – July 24, 2009

Jerry Brockey Student Center
6000 16th Avenue SW, Seattle, WA 98106-1499
Phone: (206) 764-5337
Contact: Renée Rhodes, rrhodes@sccd.ctc.edu
Website: <http://studentlife.southseattle.edu/art.html>

The artists exhibiting in *Claim* understand that the public sphere is not a neutral one, and have set out to provide alternatives to all that confronts us as we step out into the world each day. *Claim* features art that creates a more personal and engaging public space through performance, intervention and interaction. The works vary in approach, but overall provide a playful and personalized mode of interacting with the world.

Nancy Popp perches atop light posts overlooking crowded city streets. Nate Larson and Marni Shindelman turn the ease of *Facebook* communication into a manually-performed and overcomplicated mode of communication. Heidi Bender devises simple mechanisms to aid in the process of sleeping in public spaces. And check the Art Gallery website for dates and locations of Laurie McLeod's ethereal underwater videos projected onto various architectural spaces around the college campus. These are among the many provoking works that will be on view.

Summer Quarter Gallery hours:
Monday-Thursday 11 am – 5 pm

Art Gallery admission is always free and open to the public.

The mission of the South Seattle Community College Art Gallery is to introduce students and the community at large to unique artists and their works. Receptions are given to afford the opportunity of interacting with the artists. The local and campus community is encouraged to visit the Art Gallery to enjoy the inspiring works of art.

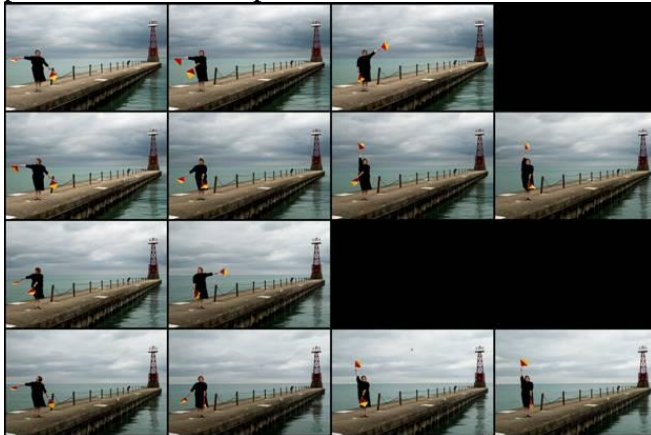
###

Media inquiries:
Public Information Office, (206) 768-6873 / coehler@sccd.ctc.edu
(Images attached)

Image Index:



Untitled (street climbing performances) – Santa Monica Pier
Nancy Popp
photo document of performance - 2005



He Said, She Said
Nate Larson + Marni Shindelman
Digital C-Print, 30" x 20" - 2009



Luo Yong's Dream
Laurie McLeod
digital video projected in site-specific sites - 2004