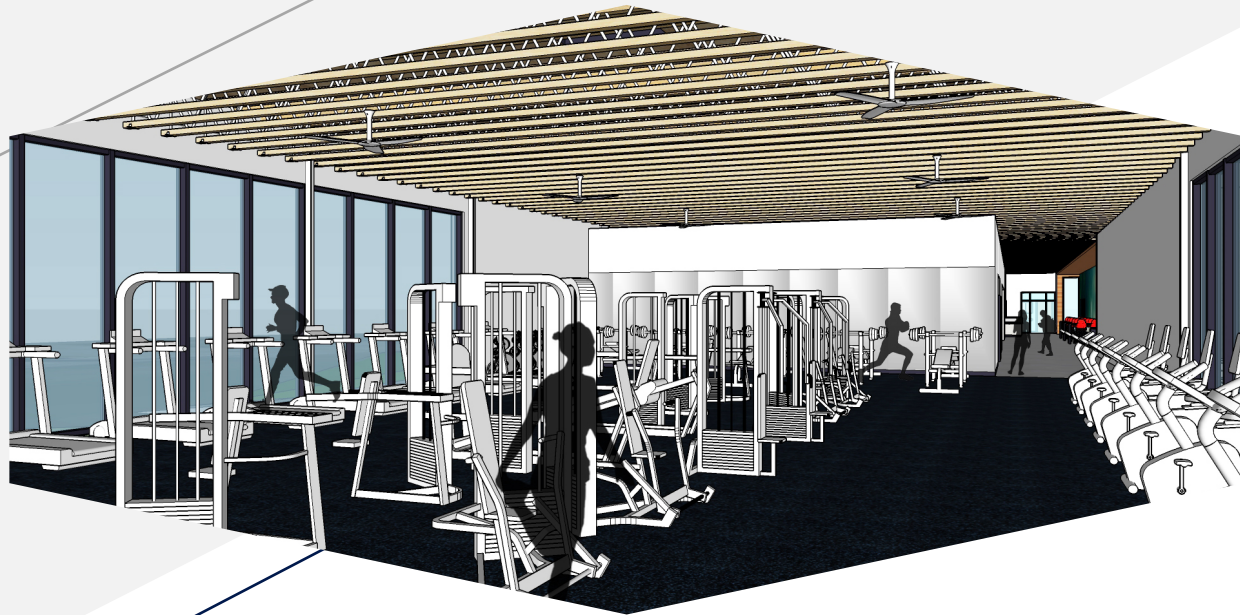


Wellness Center Overview



Presented by:

Dr. Rosie Rimando-Chareunsap,
President

Joe Barrientos

Vice President of Student Services

Julienne DeGeyter,

Vice President of Finance and
Administration

Wellness Center Features

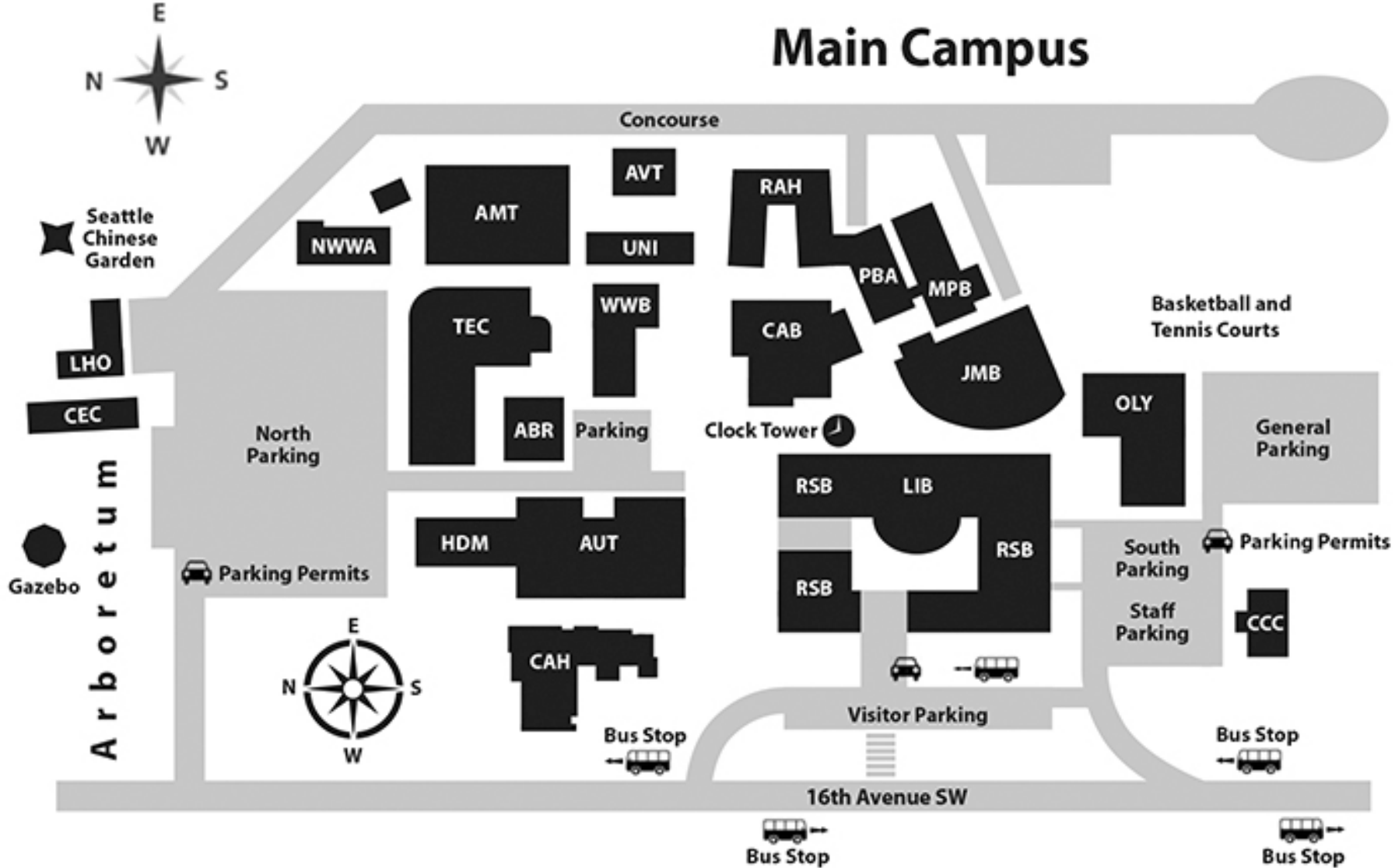
Based on Program Requests, actual features may change depending on cost

- Weight and Cardio
- Gym
- Climbing Wall
- Lockers
- Yoga Room
- Prayer Space
- Ablutions facilities

Estimated Cost: \$11,618,000



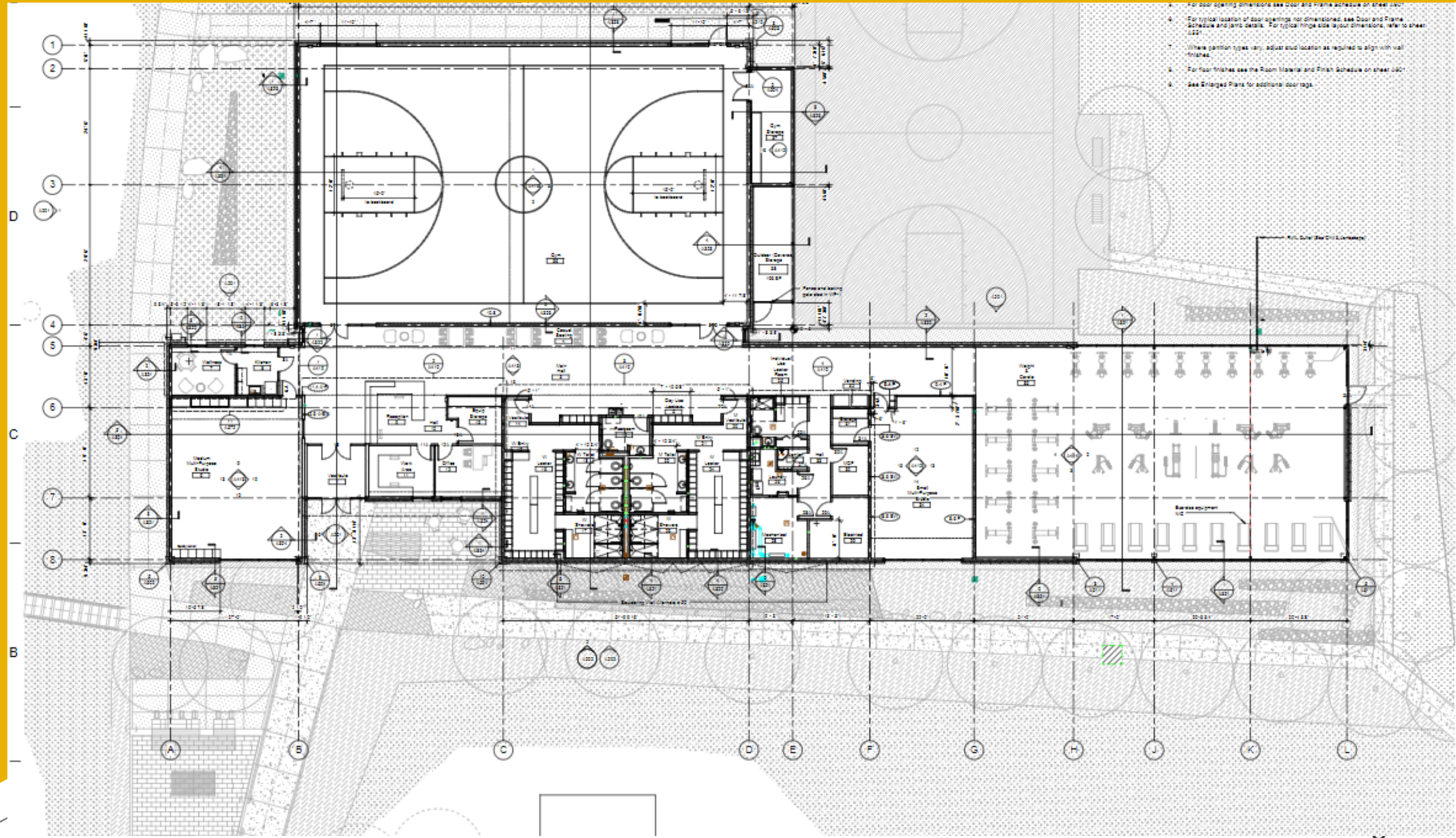
Main Campus



One of the Seattle Colleges

Wellness Center





- 4. For door opening dimensions see door and frame schedule on sheet 1001.
- 5. For typical location of door openings, not dimensioned, see Door and Frame Schedule and Jamb Details. For typical hinge side layout dimensions, refer to sheet 1001.
- 7. Where partition types vary, adjust end location as required to align with wall finishes.
- 8. For floor finishes see the Room Material and Finish Schedule on sheet 1001.
- 9. See Enlarged Plans for additional door tags.


S&B Architects, Inc.
 110 Union Street
 Seattle, WA 98101
 206.465.1900
 info@sandb.com

Fitness Center
South Seattle College
 6000 16th Avenue SW Seattle, WA 98148-1409



Project No.
 Drawing Title
FLOOR PLAN

Drawing scales indicated apply to 22" x 34" drawing sheets. Scale may vary between drawing sheets as shown on sheets.

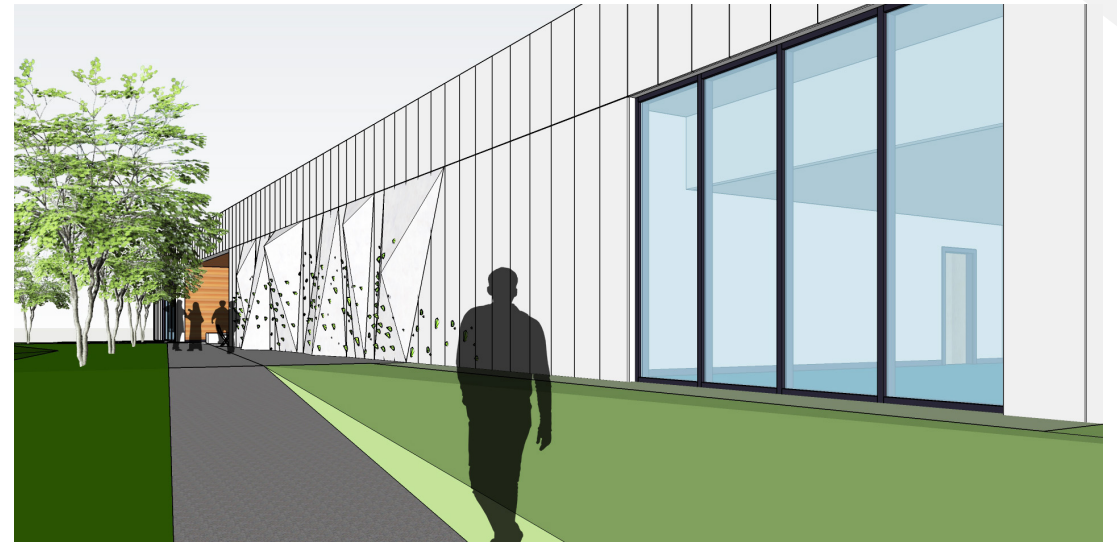
Revision	Number	Description	Date

Wellness Center

Student Spaces



Climbing Wall

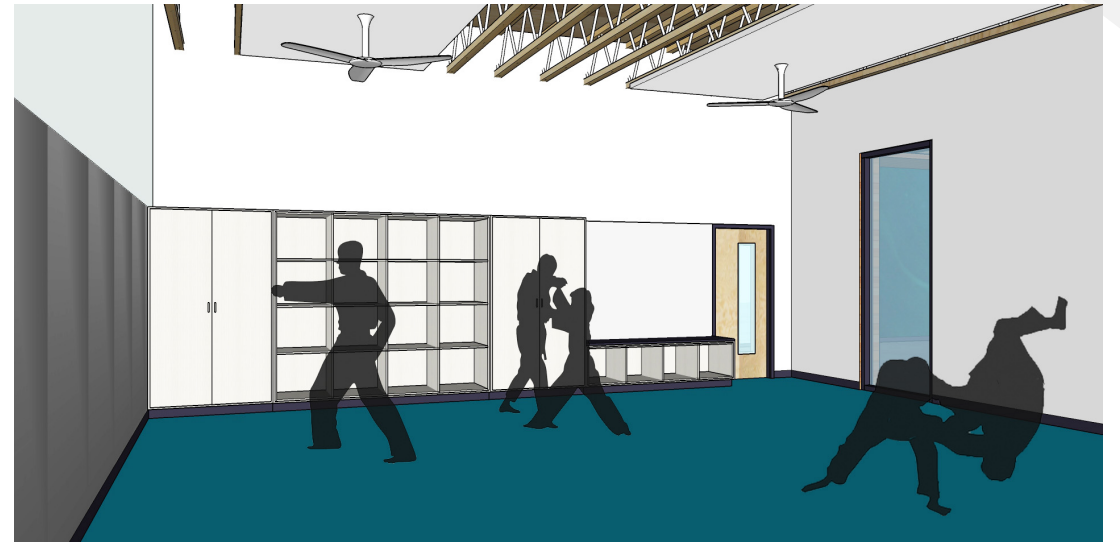


Wellness Center

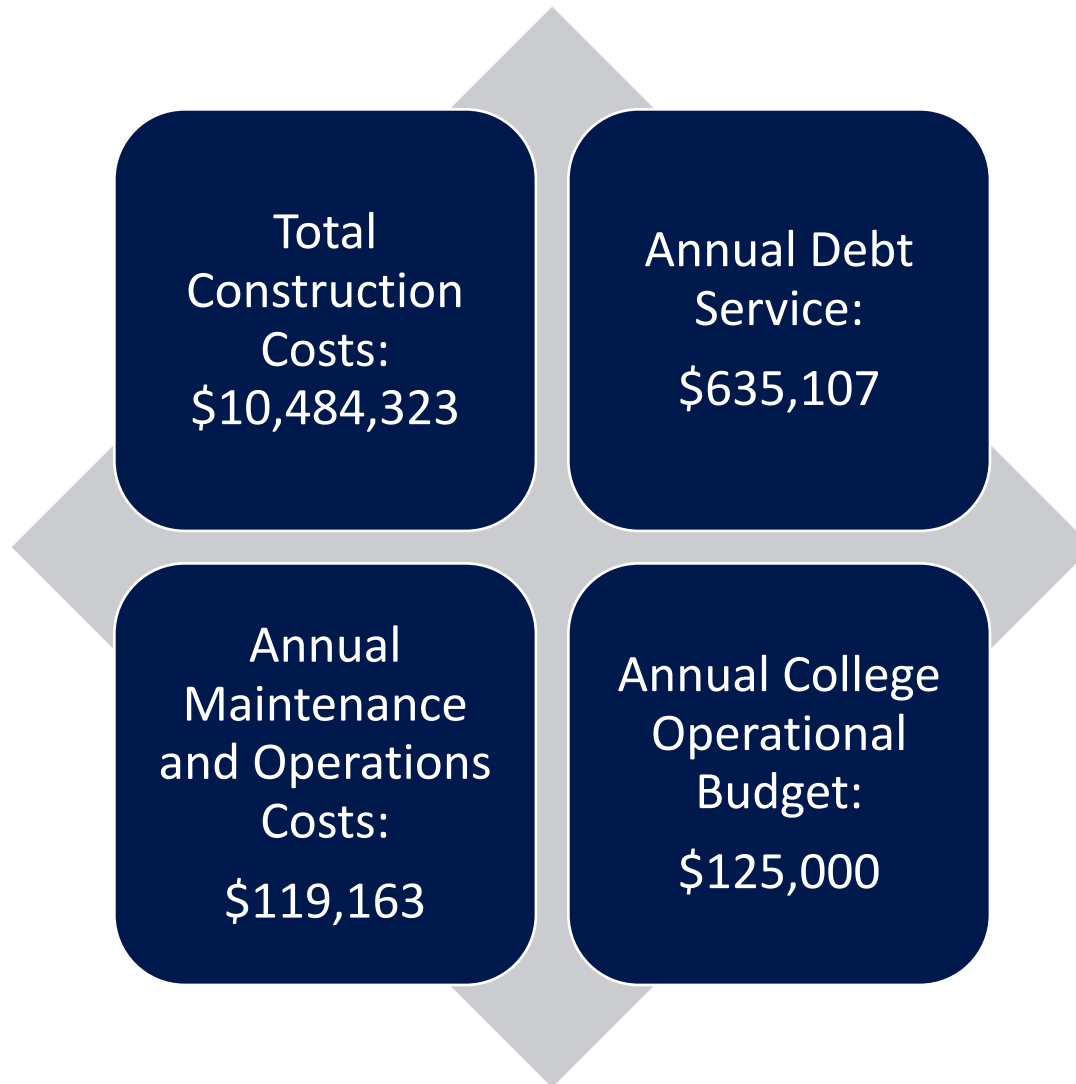
Reception



Medium Studio

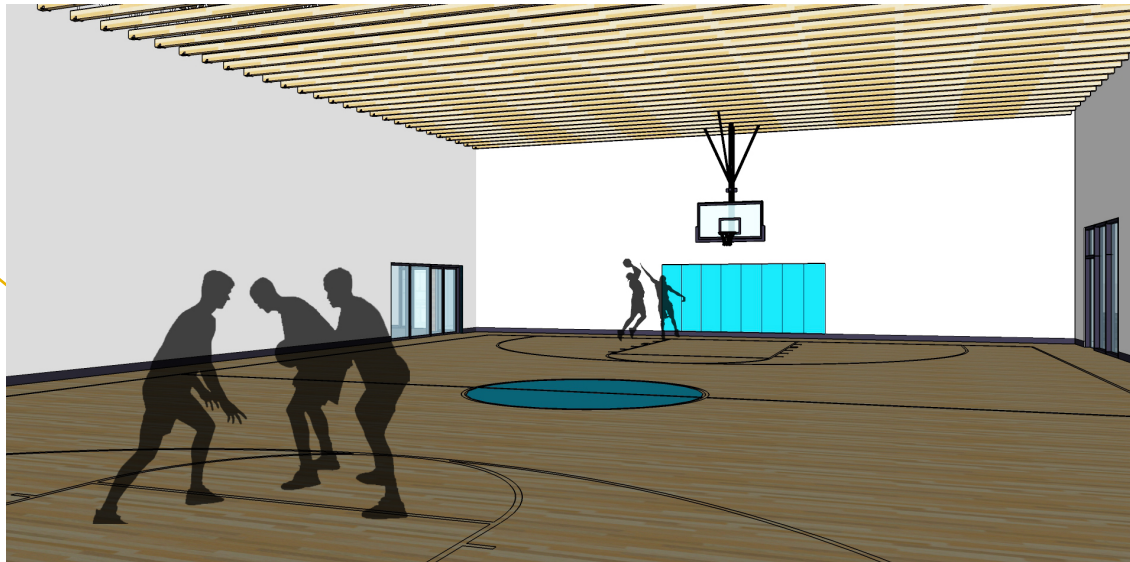


Budget

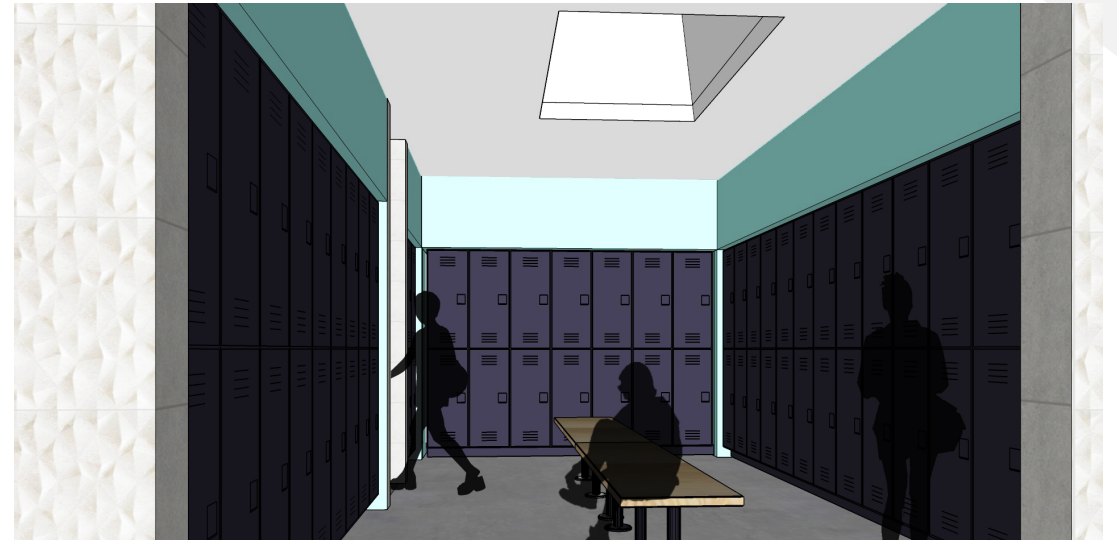


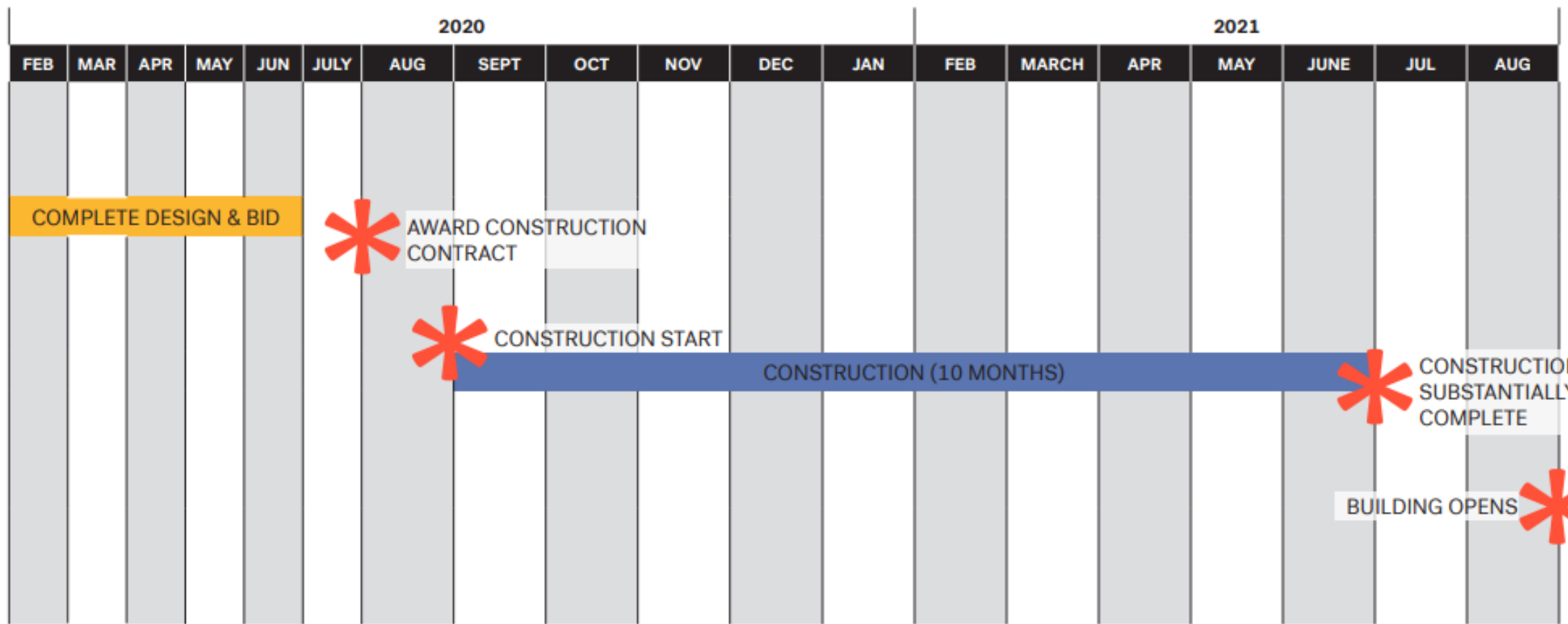
Wellness Center

Gym



Lockers





**SOUTH SEATTLE COLLEGE
FITNESS CENTER
ANTICIPATED COMPLETION SCHEDULE**

Wellness Center Advisory Committee

- Voting members are comprised of Students (8), Staff (2) and Faculty (2) plus alumni or community representative (1)
- Charged with oversight of approval of the Wellness Center annual budget and facility usage fees
- Responsible for representing student concerns, issues and ideas
- Serve as a liaison between USA and Wellness Center Staff as well as Administrative Services staff
- Subject Matter Experts
- Review Design Phases and Progress (Design and Build)



Thank You.



Julienne DeGeyter



206-934-5154



Julienne.degeyter@seattlecolleges.edu



<https://southseattle.edu/campus-information/administrative-services>



**SOUTH SEATTLE
COLLEGE**

One of the Seattle Colleges

Questions?